

tLED

tLED-190×70×30 Modular Passive LED Heatsink

Features VS Benefits

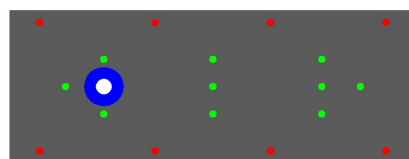
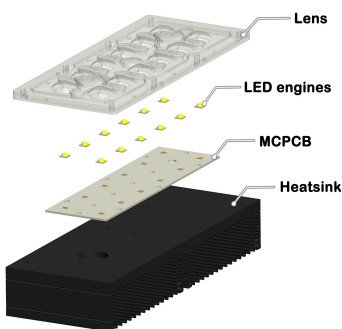
- * Mechanical compatibility with direct mounting of the SMD products to the LED cooler and thermal performance matching the lumen packages.
- * For flood light, street light and high bay designs from 2,800 to 6,800 lumen.
- * Thermal resistance range R_{th} 0.95°C/W.
- * Product size: L190×W70×H30mm- Standard width 70mm , Other widths on request.
- * Extruded from highly conductive aluminium for optimal thermal performance (AL6063-T5), aluminium 6063-T5 thermal conductivity is higher than ACD12 1.5 times.
- * 2 standard colors - clear anodised - black anodised
- * Waterproof level designs from IP65 to IP67.
- * With the SMD products (3030 , 2835 , 5050.....): Bridgelux , Cree , Edison , Citizen , LG Innotek Lumileds , Luminus, Lumens , Nichia , Osram , Prolight Opto , Seoul , Samsung , Sharp.



Adura LED engine and radiator assembly directly Mounting Options

- * Below you find an overview of SMD products which standard fit on the tLED series coolers.
- * In this way mechanical after work and related costs can be avoided, and lighting designers can standardize their designs on a limited number of LED coolers.

Mounting Options

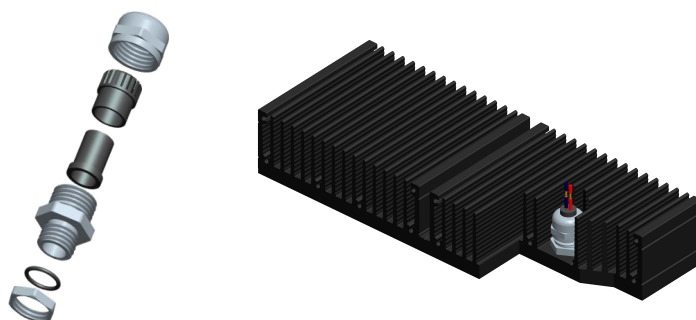


* MCPCB for the green indicator marks.
Direct mounting with machine screws M3x6.0mm;

* LEDIL Lens HB-IP-2X6 for the red indicator marks.
Direct mounting with machine screws M3x6.0mm;

* Cable feed-through holder for the blue indicator marks.

Waterproof connectors



Not only consider waterproofness of the lens, but also on outside connecting line. Mingfa Tech can provide compatible waterproof connector with tLED heat sink.

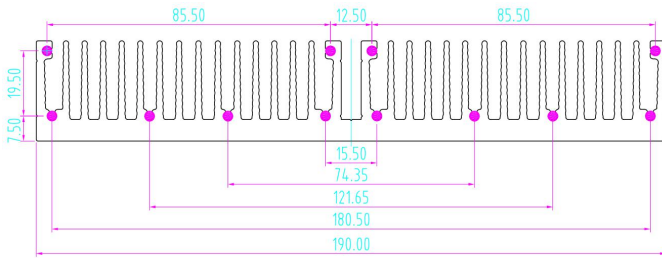
- Features :
- The claws and seals excellent design, can hold cable firmly and have a wider cable range. Resistant to salt water, weak acid, alcohol, oil, grease and common solvency.
 - 1、 Working temperature: Min -40°C to Max 120°C.
 - 2、 Body material: Brass nickel plated.
 - 3、 Cable range Dia: 3~6mm.
 - 4、 Protection degree: IP68

Mingfa tech product number:
1、 21000001-04 (M8)
2、 21000002-04 (M10)

tLED

tLED-190x70x30 Modular Passive LED Heatsink

Mounting Guide



Please find has marked pink holes on the left.
 1. Using self tapping screw to mounting. Saving the mounting holes process cost.
 2. It can mounting enclosure of fixed lighting and tight holder or other lighting parts.

Drawings & Dimensions

Example:tLED-1907030-B-1,2

Example:tLED-190 **1** 30 **2** **3**

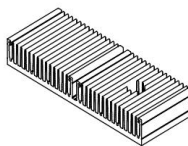
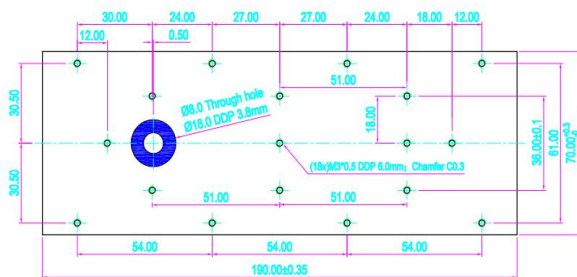
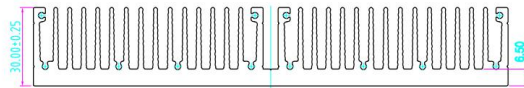
- 1** Width (mm)
- 2** Anodising Color
 B-Black
 C-Clear
 Z-Custom
- 3** Mounting Options - see graphics for details
 Combinations available
 Ex.order code - 12
 means option 1 and 2 combined

Notes:

- Mentioned models are an extraction of full product range.
- For specific mechanical adaptations please contact MingfaTech.
- MingfaTech reserves the right to change products or specifications without prior notice.



MOUNTING OPTION	Module type	Holder NO.	THREAD	THREAD DEPTH	THREAD HOLE DISTANCE
N	None	/	None	None	None
1	MCPCB	/	M3	6mm	(3x) 54.0x61.0mm
2	LEDIL Lens	/	M3	6mm	(3x) 51.0x26.0mm; (2x) 18.0mm;
3	Wire Holder	/	Φ8.0 THRU Φ18.0 DP		51.0mm



tLED

tLED-190×70×30 Modular Passive LED Heatsink

The thermal data table

	
	<i>tLED-190×70×30</i>
Model No.	tLED-190×70×30
Size	L190×W70×H30mm
Material	AL6063-T5
Finish	Black Anodized
Weight(gr)	533
Thermal Wattage	53.0W
HeatsinkOs-a²	142323
Heat Sink T Rise Above Ambient	0.95

Dissipated Power Pd(W)	Pd = Pe x (1-ηL)	
	Heat sink to ambient thermal resistance Rhs-amb (°C/W)	Heat sink to ambient temperature rise T _{hs-amb} (°C)
	tLED-190×70×30	
15.0	1.53	23.00
30.0	1.13	34.00
45.0	1.00	45.00
60.0	0.88	53.00
75.0	0.83	62.00

